

State of Wyoming Corner Record

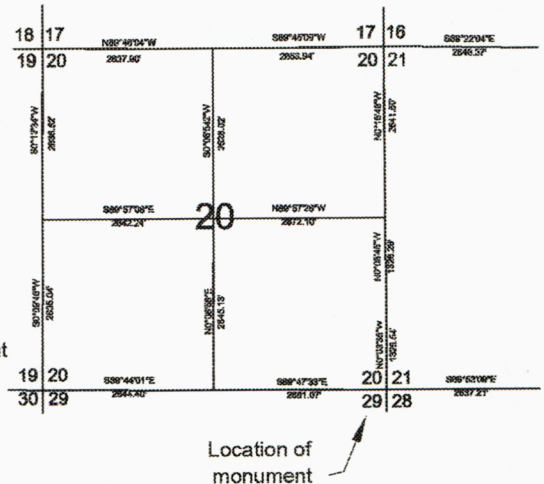
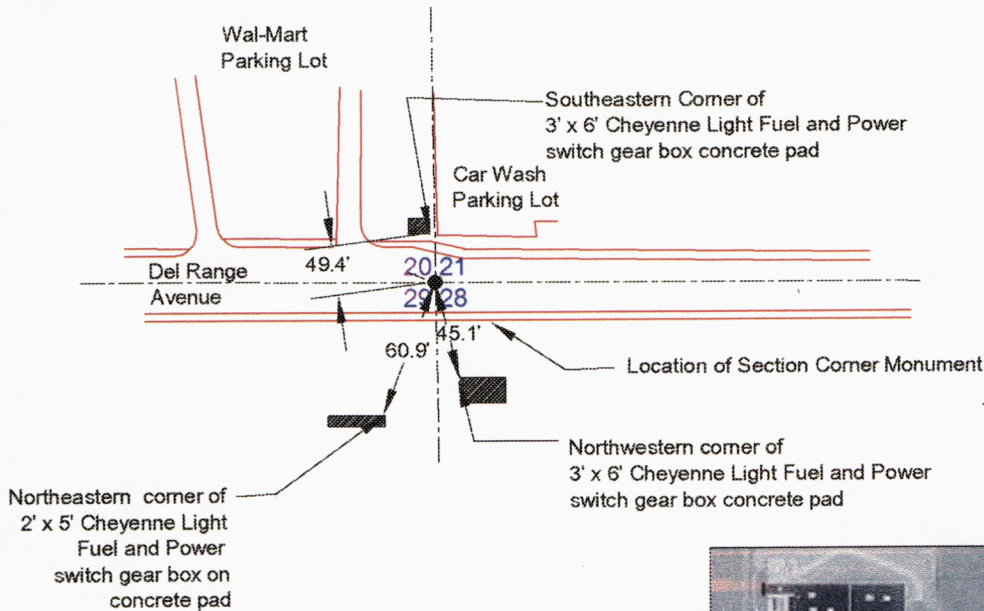
(In compliance with the *CORNER PERPETUATION AND FILING ACT*, Wyoming Statutes, 1997, Section 33-29-140 et. seq., and the Rules and Regulations of the Board of Registration for Professional Engineers and Professional Land Surveyors)

Reverse side of this form may be used if more space is needed.

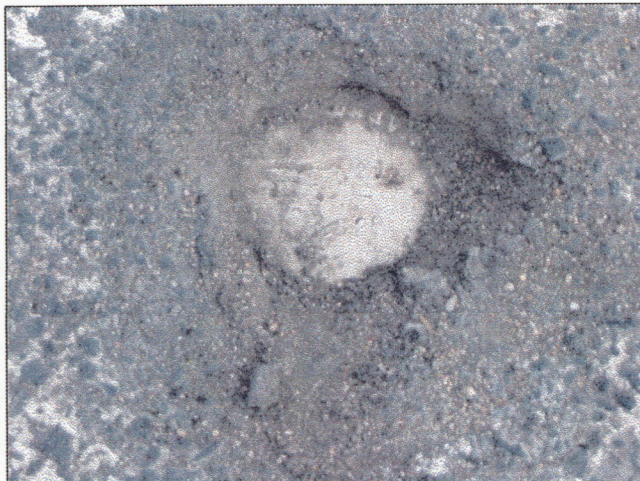
Record of original survey and citation of source of historical information (if corner is lost or obliterated). Description of corner monumentation evidence found and/or monument and accessories established to perpetuate the location of this corner. Sketch of relative location of monument, accessories, and reference points with course and distance to adjacent corner(s) (if determined in this survey). Method and rationale for reestablishment of lost or obliterated corner.

Record: Set Granite Boulder 24 x 12 x 9

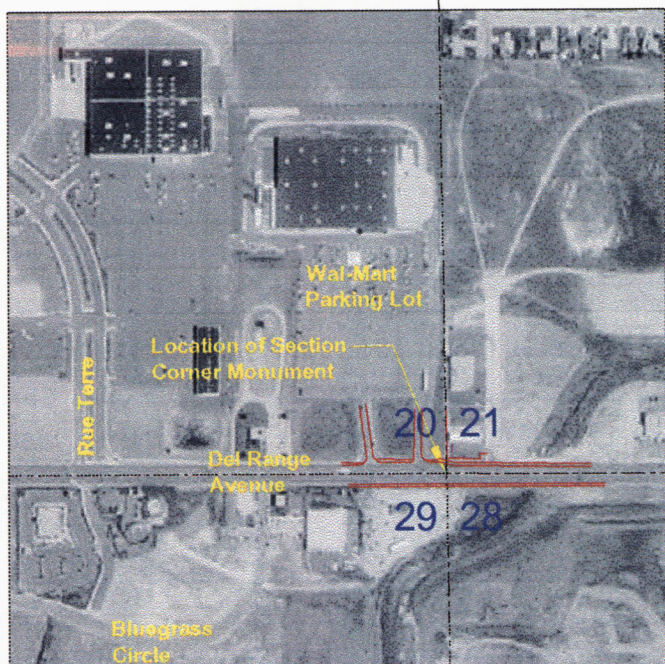
Found: 3 1/4" Standard WYDOT Aluminum cap with nearly illegible inscription as shown below



Corner Ties Detail



Cap Stamping Detail



Vicinity Map

Date of Field Work: April 2002

Office Reference: 2310 - Storey Blvd

CROSS INDEX DIAGRAM

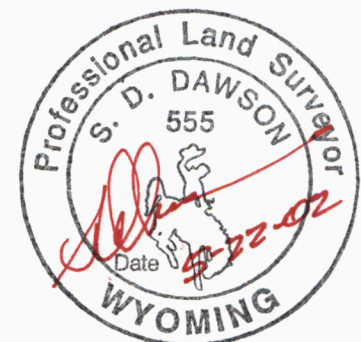
1	2	3	4	5	6	7	8	9	10	11	12	13	14	15	16	17	18	19	20	21	22	23	24	25	
A																									A
B																									B
C	6		5		4		3		2		1														C
D																									D
E																									E
F																									F
G	7		8		9		10		11		12														G
H																									H
J																									J
K																									K
L	18		17		16		15		14		13														L
M																									M
N																									N
O																									O
P	19		20		21		22		23		24														P
Q																									Q
R																									R
S																									S
T	30		29		28		27		26		25														T
U																									U
V																									V
W																									W
X	31		32		33		34		35		36														X
Y																									Y
Z																									Z



Washington
Infrastructure Services
5920 Yellowstone Road
Cheyenne, Wyoming 82009
307-634-1101

This corner record was prepared by me or under my direction and supervision.

[Signature]
SEAL & SIGNATURE

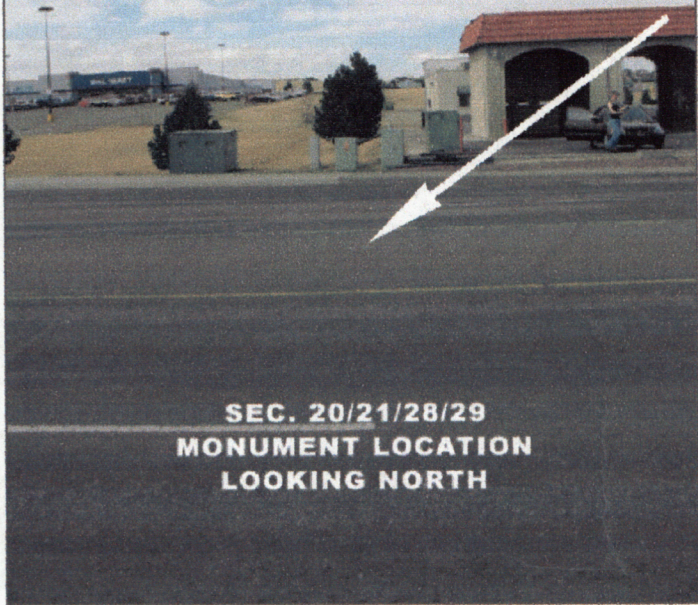


Corner Name: SE Corner of Section 20 Section: 20 T 14N R 66W 6th P.M. Cross-Index No.: R-9

SBRPEPLS/PLSW: March 1994; PLSW January 1998

RECORDED 12/19/2002 AT 1:54 PM REC# 339042 }K# 1691 PG# 1397
EBRA K. LATHROP, CLERK OF LARAMIE COUNTY, WY PAGE 1 OF 2

**APRIL 2002
STOREY BLVD.
2310**



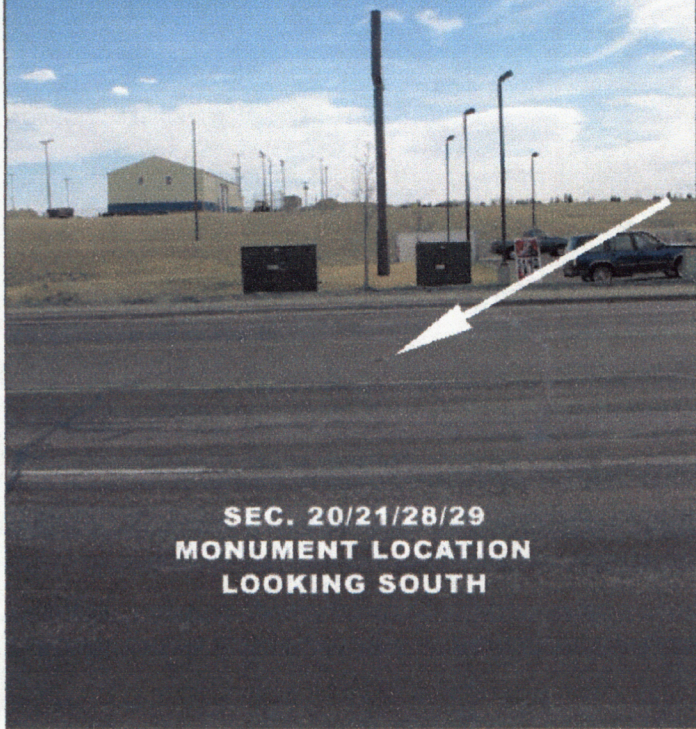
**SEC. 20/21/28/29
MONUMENT LOCATION
LOOKING NORTH**

**APRIL 2002
STOREY BLVD.
2310**



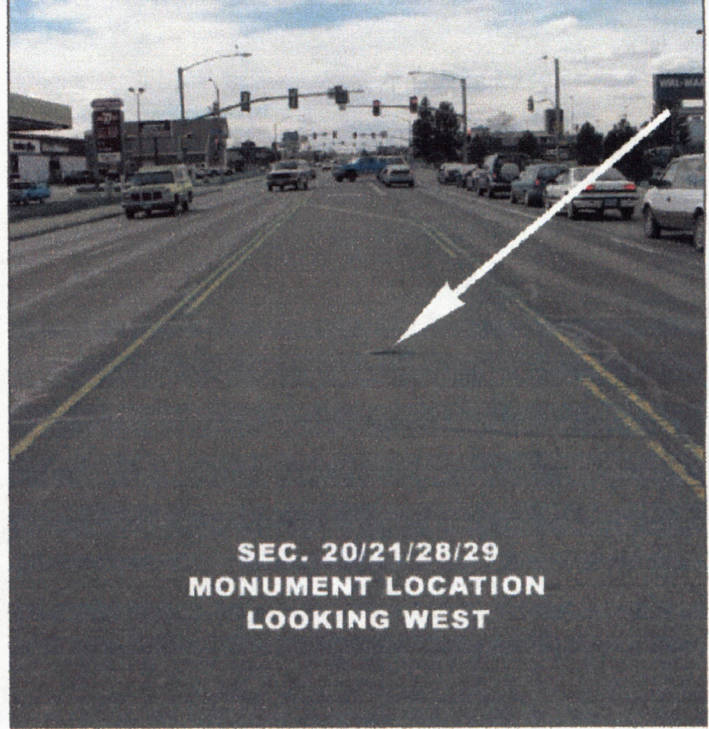
**SEC. 20/21/28/29
MONUMENT LOCATION
LOOKING EAST**

**APRIL 2002
STOREY BLVD.
2310**



**SEC. 20/21/28/29
MONUMENT LOCATION
LOOKING SOUTH**

**APRIL 2002
STOREY BLVD.
2310**



**SEC. 20/21/28/29
MONUMENT LOCATION
LOOKING WEST**

